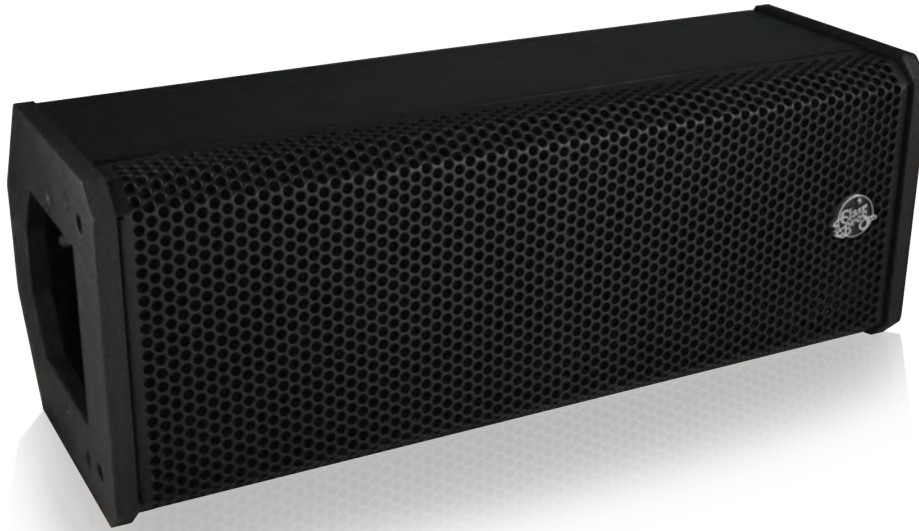




FF2-H Front Fill



APPLICATIONS

Front Fill
Under Balcony
Delay Fill
Stage Monitor

FEATURES

Two-Way Active
LF Device: 8in. (203.2mm)
HF Device: 1in. (25.4mm)
90° H x 60° V Rotatable
Integral Mounting Points
Pole Mount Option
Epoxy Mastic Finish
EP-4 Connectors
& 4-Position Terminal Strip

GENERAL DESCRIPTION

The Clair Brothers FF2-H is a compact speaker designed for applications that require high output in close proximity or a limited space.

The FF2-H measures just 8 inches high and less than 22 inches wide. The enclosure provides an unobtrusive option for listeners who do not have full benefit of the house PA or who require a near field monitor.

The FF2-H has a nominal coverage pattern of 90° x 60° and is rotatable for horizontal or vertical cabinet arrangements. The low/mid frequency section utilizes a single 8" driver capable of handling 250 watts.

The FF2-H speaker is ideal for theaters, houses of worship, cruise ships and auditoriums. The cabinet is engineered to interface successfully in any staging environment as either a portable or permanent installation model. The cabinet

provides clear, distortion-free reproduction of both speech and music program material.

As with all Clair Brothers products, the FF2-H is constructed of the finest Baltic birch plywood. The FF2-H weighs only 31 lbs. and features powder coated aluminum end caps to minimize cabinet wear for long life.

The speaker grille is constructed of high grade 14 gauge perforated steel with a durable powder coated finish and reticulated foam back.

OPTIONS & ACCESSORIES

FF2-H-M – Mobile Model
FF2-HP-M – Passive, Mobile Model
FF2-HP – Passive Model
RC-FF2 – Road Case for up to (4) FF2
FF2-PM – Pole Mount Adaptor for FF2-H/-M
Yoke Mounting Brackets

Call or e-mail Clair Brothers for more information on available options.
(717-665-4000) e-mail: sales@clairsystems.com

FF2-H Front Fill



AUDIO SPECIFICATIONS

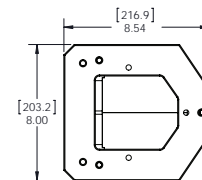
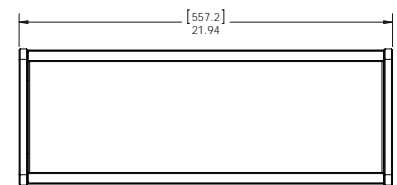
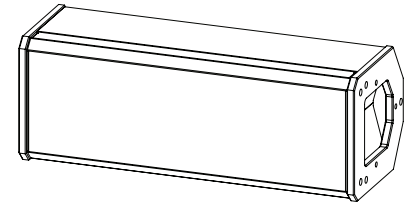
Loudspeaker Type	Two-Way Active	
Frequency Response (+/- 2dB)	Single Cabinet	100Hz–18kHz
Recommended Power Amplifier	650W Peak @ 8 Ohms	
Sensitivity (1 Watt @ 1 Meter)	LF	100.5 dB SPL
	HF	108.5 dB SPL
Maximum Output	Cont.	(LF) 125.6 dB SPL; (HF) 129.3 dB SPL
	Peak	(LF) 128 dB SPL; (HF) 131 dB SPL
Drivers	LF	8 in. (203.2mm)
	HF	1 in. (25.4mm)
Nominal Impedance	LF	8 Ohms
	HF	8 Ohms
Power Handling	Cont.	(LF) 250W; (HF) 120W
	Peak	(LF) 500W; (HF) 240W
Dispersion	Nominal -6dB	90° H x 60° V Horn (Rotatable)
Input Connections	Standard	(2) EP-4 Connectors (1 Male, 1 Female) & (1) 4-Position Terminal Strip

MECHANICAL SPECIFICATIONS

Enclosure	Shell	18mm / 12mm Baltic Birch
	Finish	Black Epoxy Mastic
Grille	Perforated Steel, Foam Backed	
Dimensions	Height	8.00 in. (203.2mm)
	Width	21.94 in. (557.2mm)
	Depth	8.54 in. (216.9mm)
Weight	Active	31 lbs. (14.1kg)
	Passive	34 lbs. (15.4kg)
Shipping Weight	Active	40 lbs. (18.1kg)
	Passive	43 lbs. (19.5kg)
Optional Rigging Accessories	Pole Mount	Adaptor (M20 x 2.5 threaded)
	Pole	Pole dimensions: Height: 35.4" - 54.3" Expanding mandrel system: Ø 1.4" - 4"

Note: All wattage figures are calculated using the rated nominal impedance.

Clair Brothers products are designed to perform optimally by utilizing factory recommended proprietary DSP settings.



FF2-H Active Configuration

EP4		Terminal Strip	
Pin	Use	Terminal Color	Use
1	Low (-)	Black	Low (-)
2	Low (+)	Red	Low (+)
3	High (-)	Black	High (-)
4	High (+)	White	High (+)

FF2-H Passive Configuration

EP4		Terminal Strip	
Pin	Use	Terminal Color	Use
1	Low (-)	Black	Low (-)
2	Low (+)	Black	High (-)
3	High (-)	Red	Low (+)
4	High (+)	White	High (+)

ARCHITECT AND ENGINEER SPECIFICATIONS

The loudspeaker contains a two-way active, or optionally passive, system featuring a total of two drivers. The low/mid frequency section shall consist of one 8" driver capable of handling 250 watts of pink noise with a 6 dB crest factor for 8 hours (as per EIA RS-426-A standard). The high frequency section shall consist of a 1" exit, 1.7" voice coil diameter compression driver mounted on a 90°H x 60°V rotatable horn. The driver is capable of handling 120 watts (1kHz to 18kHz) of pink noise with a 6 dB crest factor for two hours (as per AES-1984 and ANSI S4.26-1984 standards). The enclosure shall be constructed with 18mm, 13-ply and 12 mm, 9-ply Baltic Birch and covered with a durable black epoxy mastic finish. The dimensions shall be 8.00" high, 21.94" wide, and 8.54" deep. The system weight shall be 31 lbs. for the active model and 34 lbs. for passive. The loudspeaker system shall be the Clair Brothers FF2-H, or FF2-HP, loudspeaker.

CLAIR BROTHERS • ONE CLAIR BOULEVARD • MANHEIM, PA 17545 • 717-665-4000 • WWW.CLAIRSYSTEMS.COM

CBAS20130809

Due to constant research, development and improvements all specifications are subject to change without notice.

