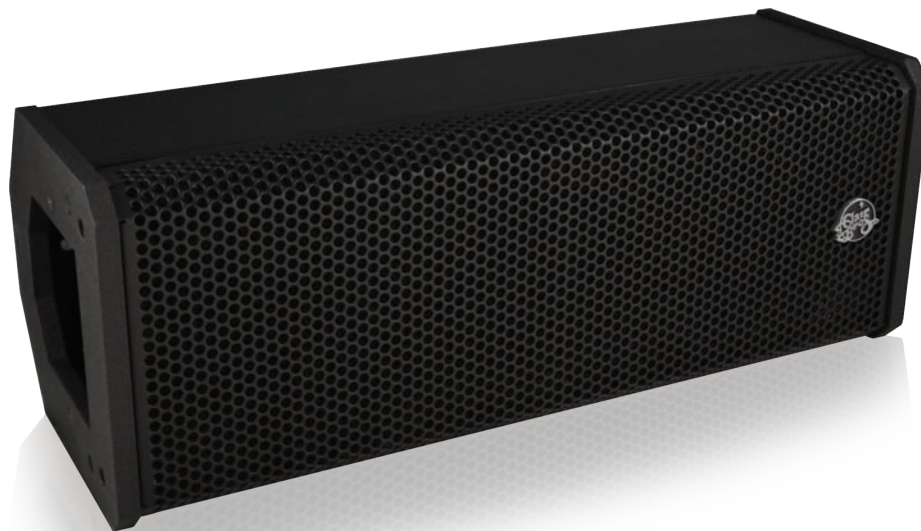




FF2-R Front Fill - Mini Line Array



APPLICATIONS

Front Fill
Under Balcony
Delay Fill

FEATURES

Two-Way Active
LF Device: 8in. (203.2mm)
HF Device: Ribbon
120° H x 10° V Coverage
Integral Mounting Points
Epoxy Mastic Finish
EP-4 Connectors
& 4-Position Terminal Strip
Mini Line Array
Configurations

GENERAL DESCRIPTION

The Clair Brothers FF2-R is a compact speaker designed for applications that require high output in close proximity or a limited space.

The FF2-R measures just 8 inches high and less than 22 inches wide. The enclosure provides an unobtrusive option for listeners who do not have full benefit of the house PA or who require a near field monitor.

The high frequency section utilizes an isodynamic ribbon transducer with a neodymium magnet structure. The ribbon has a nominal coverage pattern of 120°H x 10°V. The low/mid frequency section utilizes a custom single 8" driver which is augmented by dual ports.

The FF2-R speaker is ideal for theaters, houses of worship, cruise ships and auditoriums. The FF2-R is engineered to accommodate virtually any theater or staging environment as either a portable or permanent installation model. The cabinet provides clear, distortion-free reproduction of speech and music program material.

Multiple cabinets may be arrayed utilizing mechanical linkage rigging for mini line array configurations.

As with all Clair Brothers products, the FF2-R is constructed of the finest Baltic birch plywood. The FF2-R weighs only 27 lbs. and features powder coated aluminum end caps to minimize cabinet wear for long life.

The speaker grille is constructed of high grade 14 gauge perforated steel with a durable powder coated finish and reticulated foam back.

OPTIONS & ACCESSORIES

FF2-R-M – Mobile Model

FF2-RP-M – Passive, Mobile Model

FF2-RP – Passive Model

Yoke Mounting Brackets

Custom Order: 10°H x 120°V Orientation

FF2-R Front Fill



AUDIO SPECIFICATIONS

Loudspeaker Type	Two-Way Active	
Frequency Response (+/- 2dB)	Single Cabinet	100Hz–20kHz
Recommended Power Amplifier	650W Peak @ 8 Ohms	
Sensitivity (1 Watt @ 1 Meter)	LF	100.5 dB SPL
	HF	99 dB SPL
Maximum Output	Cont.	(LF) 125.6 dB SPL; (HF) 115 dB SPL
	Peak	(LF) 128 dB SPL; (HF) 117 dB SPL
Drivers	LF	8 in. (203.2mm)
	HF	Ribbon
Nominal Impedance	LF	8 Ohms
	HF	8 Ohms
Power Handling	Cont.	(LF) 250W; (HF) 30W
	Peak	(LF) 500W; (HF) 60W
Dispersion ¹	Nominal -6dB	120° H x 10° V ¹
Input Connections	Standard	(2) EP-4 Connectors (1 Male, 1 Female) & (1) 4-Position Terminal Strip

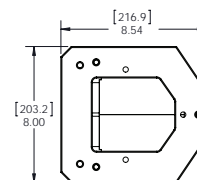
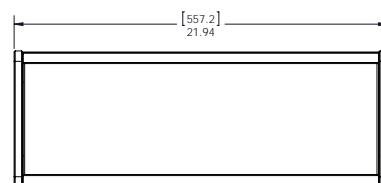
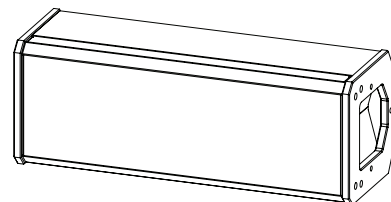
MECHANICAL SPECIFICATIONS

Enclosure	Shell	18mm / 12mm Baltic Birch
	Finish	Black Epoxy Mastic
Grille	Perforated Steel, Foam Backed	
Dimensions	Height	8.00 in. (203.2mm)
	Width	21.94 in. (557.2mm)
	Depth	8.54 in. (216.9mm)
Weight	Active	27 lbs. (12.2kg)
	Passive	30 lbs. (13.6kg)
Shipping Weight	Active	36 lbs. (16.3kg)
	Passive	39 lbs. (17.7kg)

¹ Custom order 10° H x 120° V orientation available.

Note: All wattage figures are calculated using the rated nominal impedance.

Clair Brothers products are designed to perform optimally by utilizing factory recommended proprietary DSP settings.



FF2-R Active Configuration

EP4		Terminal Strip	
Pin	Use	Terminal Color	Use
1	Low (-)	Black	Low (-)
2	Low (+)	Red	Low (+)
3	High (-)	Black	High (-)
4	High (+)	White	High (+)

FF2-R Passive Configuration

EP4		Terminal Strip	
Pin	Use	Terminal Color	Use
1	Low (-)	Black	Low (-)
2	Low (+)	Black	High (-)
3	High (-)	Red	Low (+)
4	High (+)	White	High (+)

ARCHITECT AND ENGINEER SPECIFICATIONS

The loudspeaker contains a two-way active, or optionally passive, system featuring a total of two drivers. The low/mid frequency section shall consist of one 8" driver capable of handling 250 watts of pink noise with a 6 dB crest factor for 8 hours (as per EIA RS-426-A standard). The high frequency section shall consist of an isodynamic ribbon transducer with a 120°H x 10°V dispersion. The ribbon transducer is capable of handling 30 watts (1kHz to 18kHz) of pink noise with a 6 dB crest factor for two hours (as per AES-1984 and ANSI S4.26-1984 standards). The enclosure shall be constructed with 18mm, 13-ply and 12mm, 9-ply Baltic Birch and covered with a durable epoxy mastic finish. The dimensions shall be 8.00" high, 21.94" wide, and 8.54" deep. The system weight shall be 27 lbs. for the active version and 30 lbs. for the passive. The loudspeaker system shall be the Clair Brothers FF2-R, or FF2-RP loudspeaker.

CLAIR BROTHERS • ONE CLAIR BOULEVARD • MANHEIM, PA 17545 • 717-665-4000 • WWW.CLAIRBROTHERS.COM

CBAS20160613

Due to constant research, development and improvements all specifications are subject to change without notice.

