



# RSS Full Range Loudspeaker



## APPLICATIONS

Houses of Worship  
Court Houses  
Dance Clubs  
Entertainment Venues  
Public Address Systems  
Delay Fill

## FEATURES

Two-Way Active  
LF Devices: (2) 5in. (127mm)  
HF Device: 1in. (25.4mm)  
Rotatable 90°H x 60°V HF  
Epoxy Mastic Finish  
4-Position Terminal Strip

## GENERAL DESCRIPTION

The Clair Brothers RSS is a two-way active, full range, high output loudspeaker designed primarily as a stair speaker but can be used for a variety of permanent installations. The compact, ported cabinet delivers exceptional intelligibility for speech and music program material. The RSS is ideal for near-field and area fill uses in stair risers. Other uses include delays, columns, stage aprons and balconies.

The RSS has exceptional performance in a low profile cabinet measuring a mere 5.5" x 27" x 17.5" in the installation back box. The speaker is ideal for a variety of venues including theaters, houses of worship, cruise ships and auditoriums.

As with all Clair Brothers products, the RSS is constructed of the finest Baltic birch plywood and finished with a rugged exterior epoxy.

The RSS-BB back box (which is required for in-stair mounting) is made of 14 gauge steel and has electrical knock-outs for hard-piped installations. The back box is sold separately so pre-installation can occur well ahead of final installation. Utilize the RSS-MB (Yoke/Mounting Bracket) for a variety of mounting configurations without the back box.

## OPTIONS & ACCESSORIES

**RSS-P** – Passive Model

**RSS-BB** – Back Box for In-Stair Installation

**RSS-MB** – Under Balcony Mounting Bracket/Yoke (No back box)

Custom Grilles and Rigging Yokes Available

Custom Colors

EP-4 Connector

# RSS Full Range Loudspeaker



## AUDIO SPECIFICATIONS

Loudspeaker Type	Two-Way Active	
Frequency Response (+/- 2dB)	65Hz–18kHz	
Recommended Power Amplifier	800W @ 8 Ohms	
Sensitivity (1 Watt @ 1 Meter)	95 dB SPL	
Maximum Output	Cont.	122 dB SPL
	Peak	125 dB SPL
Drivers	LF	(2) 5 in. (127mm)
	HF	(1) 1 in. (25.4mm)
Nominal Impedance	LF	16 Ohms
	HF	16 Ohms
	Passive <sup>1</sup>	8 Ohms
Power Handling	Cont.	220W
	Peak	500W
Dispersion	Nominal -6dB	90° H x 60° V (Rotatable)
Input Connections	Standard	4-Position Terminal Strip
	Optional	EP-4 Connector

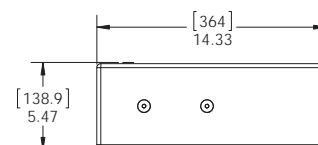
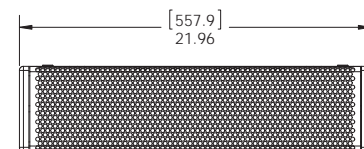
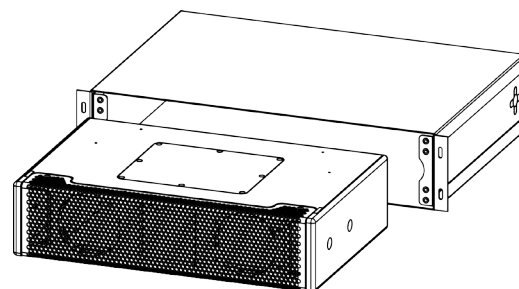
## MECHANICAL SPECIFICATIONS

Enclosure	Shell	18mm / 12mm Baltic Birch
	Finish	Black Epoxy Mastic
Back Box Enclosure	Back Shell	14 Gauge Steel
Grille	Perforated Steel, Foam Backed	
Dimensions with Back Box	Height	5.52 in. (140.3mm)
	Width	27.02 in. (686.4mm)
	Depth	17.52 in. (445.1mm)
Weight	Active	24 lbs. (10.9kg)
	Passive	26 lbs. (11.8kg)
Shipping Weight	Active	32 lbs. (14.5kg) each [Shipped in Pairs]
	Passive	34 lbs. (15.4kg) each [Shipped in Pairs]

<sup>1</sup> Passive loudspeaker is available as a model option.

Note: All wattage figures are calculated using the rated nominal impedance.

Clair Brothers products are designed to perform optimally by utilizing factory recommended proprietary DSP settings.



### RSS Terminal Strip Configuration

Terminal Color	Use
Black	Low (-)
Red	Low (+)
Black	High (-)
White	High (+)

### RSS-P Terminal Strip Configuration

Terminal Color	Use
Black	Low (-)
Black	High (-)
Red	Low (+)
White	High (+)

## ARCHITECT AND ENGINEER SPECIFICATIONS

The loudspeaker shall be a two-way active, or optionally passive, system featuring a total of three (3) drivers. The low/mid frequency section shall consist of two 5" drivers capable of handling 220 watts of pink noise with a 6 dB crest factor for eight hours (as per EIA RS-426-A standard). The high frequency section shall consist of a 1" exit, 1" voice coil diameter compression driver mounted on a 90° H x 60° V rotatable horn. The driver is capable of handling 80 watts (1 kHz to 10 kHz) of pink noise with a 6 dB crest factor for two hours (as per AES-1984 and ANSI S4.26-1984 standards). The enclosure shall be constructed with 18mm, 13-ply and 12mm, 9-ply Baltic birch and covered with a durable black epoxy mastic finish. The loudspeaker dimensions shall be 5.47" high, 21.96" wide, and 14.33" deep; the back box dimensions shall be 5.52" high, 27.02" wide, and 17.52" deep. The active system weight shall be 24.0 lbs. (10.9kg); the passive system weight shall be 26.0 lbs. (11.8kg). The loudspeaker system shall be the Clair Brothers RSS, or RSS-P, loudspeaker.

CLAIR BROTHERS • ONE CLAIR BOULEVARD • MANHEIM, PA 17545 • 717-665-4000 • WWW.CLAIRBROTHERS.COM

CBAS20140828

Due to constant research, development and improvements all specifications are subject to change without notice.

