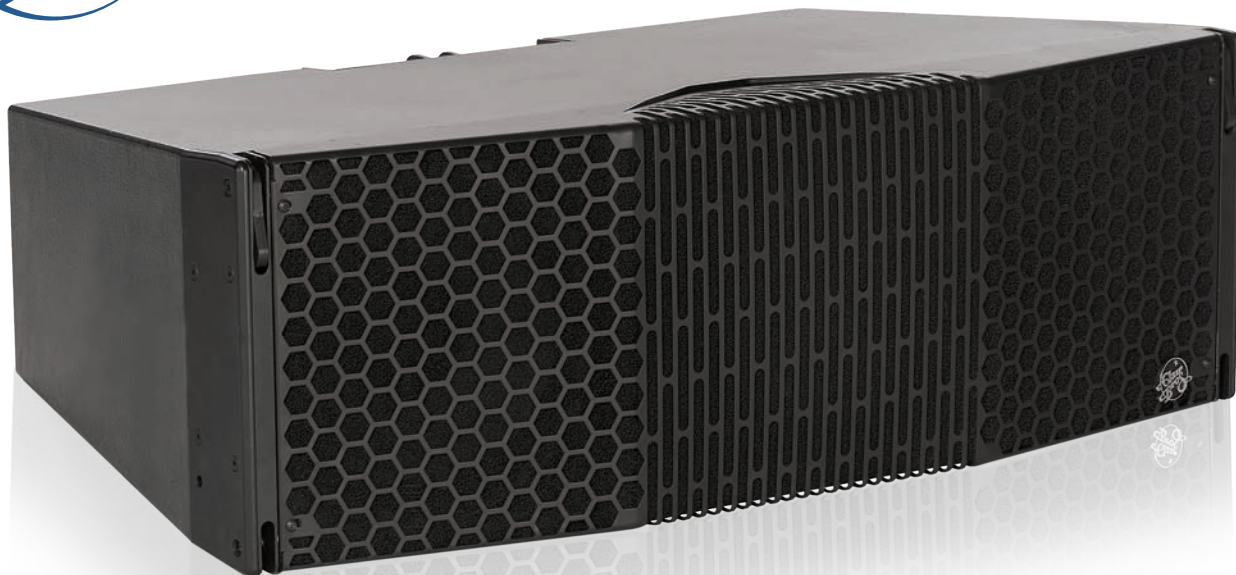




i212-i Line Array



APPLICATIONS

Performing Arts Centers
Houses of Worship
Stadiums/Arenas
Night Clubs
Cruise Ship Venues

FEATURES

Max Output 144 dB*
LF Devices: (2) 12 in. (304.8mm)
MF Devices: (4) 6 in. (152.4mm)
HF Devices: (2)
Exit: 1.4 in. (35.6mm)
Voice Coil Diam: 3.0 in. (76.2mm)
90° H x 10° V Coverage
Three-Way Active
Integral Bimodal Rigging
Epoxy Mastic Finish
EP-8 Connector

* [SPL at 1Meter bandpass dependent]

GENERAL DESCRIPTION

The i212-i is Clair Brothers latest innovation in line array technology for permanent installations. It incorporates an all new approach in modular midrange and high frequency technology, providing excellent controlled directivity. The centrally located mid/high modules provide 90° horizontal by 10° vertical coverage and are symmetrically flanked by the i212-i low frequency sections. Each 12" low frequency driver is front loaded in its own tuned reflex chamber.

i212-i enclosures are equipped with integrated bimodal rigging including adjustable rear rigging for a variety of installation applications. The rear rigging device allows the speaker array to be adjusted from 0° to 10° at 0, 2.5, 5, 7.5 or 10° increments when the line array is flown or stacked.

Increased angular resolution is available using Bimodal Incremental Rigging Disc (B.I.R.D.) accessories (0.5°, 0.75°, 1.0°, & 1.25° increments - for use in compression rigging mode only).

Clair Brothers combines amplification, and proprietary DSP processing in permanent or portable racks for all i212 systems. Custom cabling for systems is available as well and can be pre-wired, labeled and installed.

EASE GLL files are available upon request for i212 90° and 120° cabinets.

As with all Clair Brothers speaker products, the i212-i is constructed with the finest Baltic birch plywood. The enclosure is finished with a rugged exterior black epoxy mastic finish to withstand the most demanding conditions. The speaker grille is constructed of high-grade 14 gauge perforated steel and finished with a commercial grade powder coat finish.

OPTIONS & ACCESSORIES

i212-WR – Weather Resistant Model

i212-M – Mobile Model

120° H x 10° V Dispersion

Proprietary DSP + Amplification Rack Packages

Accessories:

Ground Stack Rigging

Soft Cover and Dolly Transport

Bimodal Incremental Rigging Discs (B.I.R.D.)

Custom Colors Available

Call or e-mail Clair Brothers for more information on available options.
(717-665-4000) e-mail: sales@clairbrothers.com

i212-i Line Array



AUDIO SPECIFICATIONS

Loudspeaker Type	Line Array Element	Three-Way Active
Frequency Response (+/- 2dB)	Single Cabinet	45Hz–20kHz
Recommended Power Amplifier		1200–1800W @ 8 Ohms
Sensitivity (1 Watt @ 1 Meter)	System Average	106 dB SPL w/ Proprietary Processing ¹
	LF	99 dB SPL
	MF	104 dB SPL
	HF	107.7 dB SPL
Maximum Output		144 dB SPL @ 1M Bandpass Dependent 139 dB SPL @ 1M Full Bandwidth
Drivers	LF	(2) 12 in. (304.8mm)
	MF	(4) 6 in. (152.4mm)
	HF	(2) Exit 1.4 in. (35.6mm); VC diameter 3.0 in. (76.2mm)
Nominal Impedance	LF	2 x 8 Ohms
	MF	8 Ohms
	HF	8 Ohms
Power Handling	LF	1800W
	MF	720W
	HF	320W
Dispersion	Standard	90° H x 10° V
	Optional	120° H x 10° V
Input Connection		(2) EP-8 Connectors (1 Male, 1 Female)

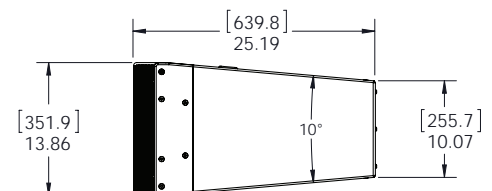
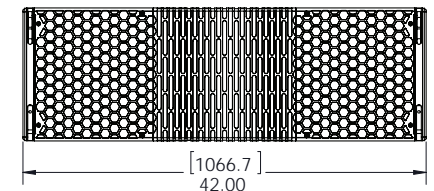
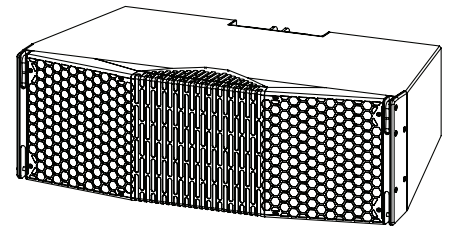
MECHANICAL SPECIFICATIONS

Enclosure	Shell	18mm Baltic Birch
	Finish	Black Epoxy Mastic
Grille		Powder Coated Steel, Foam Backed
Dimensions	Front Height	13.86 in. (351.9mm)
	Rear Height	10.07 in. (255.7mm)
	Width	42.00 in. (1066.7mm)
	Depth	25.19 in. (639.8mm)
Weight		172 lbs. (78.0kg)
Shipping Weight		188 lbs. (85.3kg)

¹ This figure represents the average sensitivity as a function of frequency for the entire three-way system. 106dB SPL @ 1 Watt, 1 Meter with proprietary processing average over full bandwidth.

Note: All wattage figures are calculated using the rated nominal impedance.

Clair Brothers products are designed to perform optimally by utilizing factory recommended proprietary DSP settings.



i212-i EP-8 Pin Configuration

Pin	Use	Pin	Use
1	Low 1 (–)	5	Mid (–)
2	Low 1 (+)	6	Mid (+)
3	Low 2 (–)	7	High (–)
4	Low 2 (+)	8	High (+)

ARCHITECT AND ENGINEER SPECIFICATIONS

The loudspeaker system shall be a three-way active, line array element cabinet built for permanent installation. The front of the enclosure shall be fitted with a 14 gauge perforated steel grille backed with foam. The system shall have an amplitude response of 45Hz to 20,000 Hz (+/– 2 dB). The loudspeaker system shall be symmetrically loaded with two 12" woofers, four 6" midrange transducers. The low frequency drivers shall be 12" nominal diameter capable of handling 900W of power as per AES Standard. The low frequency drivers shall each be mounted in independent tuned vented chambers. The mid/high frequency section shall be modular with each module containing one high frequency waveguide and two midrange transducers. The midrange drivers shall be 6" nominal diameter capable of 180W of power as per AES Standard. The high frequency horn section shall be centrally located within the enclosure and shall feature 1.4" exit / 3" voice coil diameter compression drivers that are each capable of 160W of power as per AES standard and are mounted to a waveguide and horn assembly that provides a 90° H X 10° V dispersion. The rigging shall be structurally integrated into the enclosure construction and shall permit the deployment of the cabinet into typical line array configurations. The loudspeaker enclosure shall be 18mm, 13-ply Baltic birch plywood. The cabinet shall be finished using black epoxy mastic finish. The loudspeaker shall be 13.86" H (front) x 10.07" H (rear) x 42.00" W x 25.19" D and weigh 172 lbs (78.0kg). The loudspeaker system shall be the Clair Brothers i212-i speaker.

CLAIR BROTHERS • ONE CLAIR BOULEVARD • MANHEIM, PA 17545 • 717-665-4000 • WWW.CLAIRBROTHERS.COM

CBAS20170317

Due to constant research, development and improvements all specifications are subject to change without notice.

